



Wraparound Fidelity Index

version 4.0

Summary Report

EXAMPLE SITE - Anywhere, MT
October 4, 2007

Prepared by
The Wraparound Evaluation and Research Team

Department of Psychiatry
University of Washington
Public Behavioral Health and Justice Policy
2815 Eastlake Avenue East - Suite 200
Seattle, WA 98102
wrapeval@u.washington.edu
<http://depts.washington.edu/wrapeval>

TABLE OF CONTENTS

INTRODUCTION	5
Purpose.....	5
Procedure	5
OVERVIEW GRAPHS	7
Percent Wraparound Fidelity for Combined and Individual Respondents	7
Comparison of Wraparound facilitator, Caregiver, Team Member, and Youth Principle Percentages for 20 Total Families.....	10
ITEM GRAPHS.....	13
Principle 1: Voice and Choice	14
Principle 2: Team Based	15
Principle 3: Natural Supports.....	16
Principle 4: Collaborative	17
Principle 5: Community Based	18
Principle 6: Culturally Competent	19
Principle 7: Individualized.....	20
Principle 8: Strengths based.....	21
Principle 9: Persistence	22
Principle 10: Outcomes based.....	23
REFERENCES.....	24

INTRODUCTION

Purpose

The purpose of this evaluation is to determine the extent to which the services and supports that are being received by children, youth, and families enrolled in services at the *EXAMPLE SITE* adhere to the principles and primary activities of the wraparound process on an individual child, youth, or family basis. We consider adherence to the 10 principles and the implementation of the key activities as the foundation of high-quality wraparound implementation, and as such, the WFI-4 is designed to assess the extent to which both the principles and activities are being implemented in service delivery, according to the model defined by the National Wraparound Initiative (2004; see www.rtc.pdx.edu/nwi).

Procedure

The Wraparound Fidelity Index (WFI) is an interview that measures adherence to the principles and primary activities of the wraparound process on an individual child, youth, or family basis. The WFI is completed through brief, confidential telephone or face-to-face interviews with three types of respondents: (1) parents or caregivers, (2) youths (11 years of age or older), and (3) wraparound facilitators. We believe it is important to gain the unique perspectives of these three informants to understand fully how wraparound is being implemented. In addition, a program or evaluation team may wish to gain the perspective of a fourth type of informant: a team member other than the caregiver, youth, or facilitator.

For each item, respondents' answers from the WFI interview are coded as *Yes* (high fidelity), *Somewhat* or *Sometimes* (partial fidelity), or *No* (low fidelity). Responses are similarly ranked on a scale from 0 (low fidelity) to 2 (high fidelity). It is important to note that many of the items are reverse-coded. For example, a *Yes* response on a standard item (e.g., "Before your first team meeting, did your wraparound facilitator fully explain how the wraparound process would work?") would be scored a 2, indicating good Wraparound fidelity. However, a *Yes* response to a reverse-coded item (e.g., "Is it difficult to get team members to attend team meetings when they are needed?") would receive a 0. The four item scores for each Principle are summed, resulting in a total Principle score, ranging from 0 (low fidelity) to 8 (high fidelity). As for many scores from the WFI, these Principle scores are often expressed as a percentage of total possible fidelity (i.e., an Principle score of 7 out of 8 would be presented as 87.5% fidelity).

Caregivers, Wraparound facilitators and Team members are asked nearly identical questions on all 10 principles of wraparound (40 items). Many youth items do not measure exactly the same components as the Wraparound facilitators and caregivers (e.g., Voice and Choice items on the caregiver and Wraparound facilitator forms ask about *caregiver* involvement while the same Principle on the youth form asks about *youth* involvement). This was done to make the questions more relevant to youth and better capture their motivation.

It is important to note that the information presented in this report is descriptive and any differences noted (e.g., between respondent types or principles) do not necessarily reflect statistical significance. Findings are presented in five ways, starting with broad summaries and then moving to more detailed analyses:

1. **Total Fidelity scores** are presented for each of the three respondent types and **combined fidelity scores** incorporate data from the three respondents for individual families;

2. **Principle scores** are presented for each of the 10 Principles (combining data across the three respondent types);
3. **Principle scores** for each of the possible **types of respondents** are then presented for each of the 10 Principles;
4. **Individual item scores** are then presented for individual respondents; and
5. **Individual phase scores** are provided for individual respondents.

Interpreting WFI Results

Until recently, WFI scores for a community or site were difficult to interpret because of the lack of external criteria or norms against which to compare aggregate scores. Stakeholders and program administrators could compare scores to those obtained for other sites or to scores achieved by the program in earlier stages of development, but there were no guidelines to what constitutes “good” fidelity. To begin to overcome this barrier, the research team has begun to compile WFI-4 data nationally. Using this information, we will be able to present tentative fidelity standards to help you interpret some of the results presented in this report. These results will be completed by 2008. For preliminary WFI-4 results, see this link from the 20th Annual Research & Training Center proceedings, held in March 2007.

<http://rtckids.fmhi.usf.edu/rccconference/handouts/pdf/20/Session%2041/bruns.pdf>. You may also email wrapeval@u.washington.edu to obtain a copy of the presentation. *Please note these are only preliminary results; fidelity guidelines will be after compilation of adequate national data, probably in early 2008.*

Participants included in this report

Data for 20 total families receiving services in the **EXAMPLE SITE** system of care were included in this evaluation. Of those 20 total families, WFI respondents included 8 caregivers, 9 youth, 11 team members, and 20 Wraparound facilitators.

The following demographic statistics represent the **entire sample**:

- The youth receiving services ranged in age from 0 to 17 years (mean age approximately 13.6); 25% were female, 75% male.
- The average length of time in Wraparound was approximately 8.21 months (with a range of 6 to 12 months).
- Five percent of the youth were Caucasian and 84% were African American (racial or ethnic background was reported as ‘other’ for 8.7% of the sample). Thirty percent of the youth were of Hispanic ethnicity.
- At the time of this evaluation, 5% were with two parents, at least one biological; 20% with the biological mother only; 70% ward of the state; and 5% with foster parents.

OVERVIEW GRAPHS

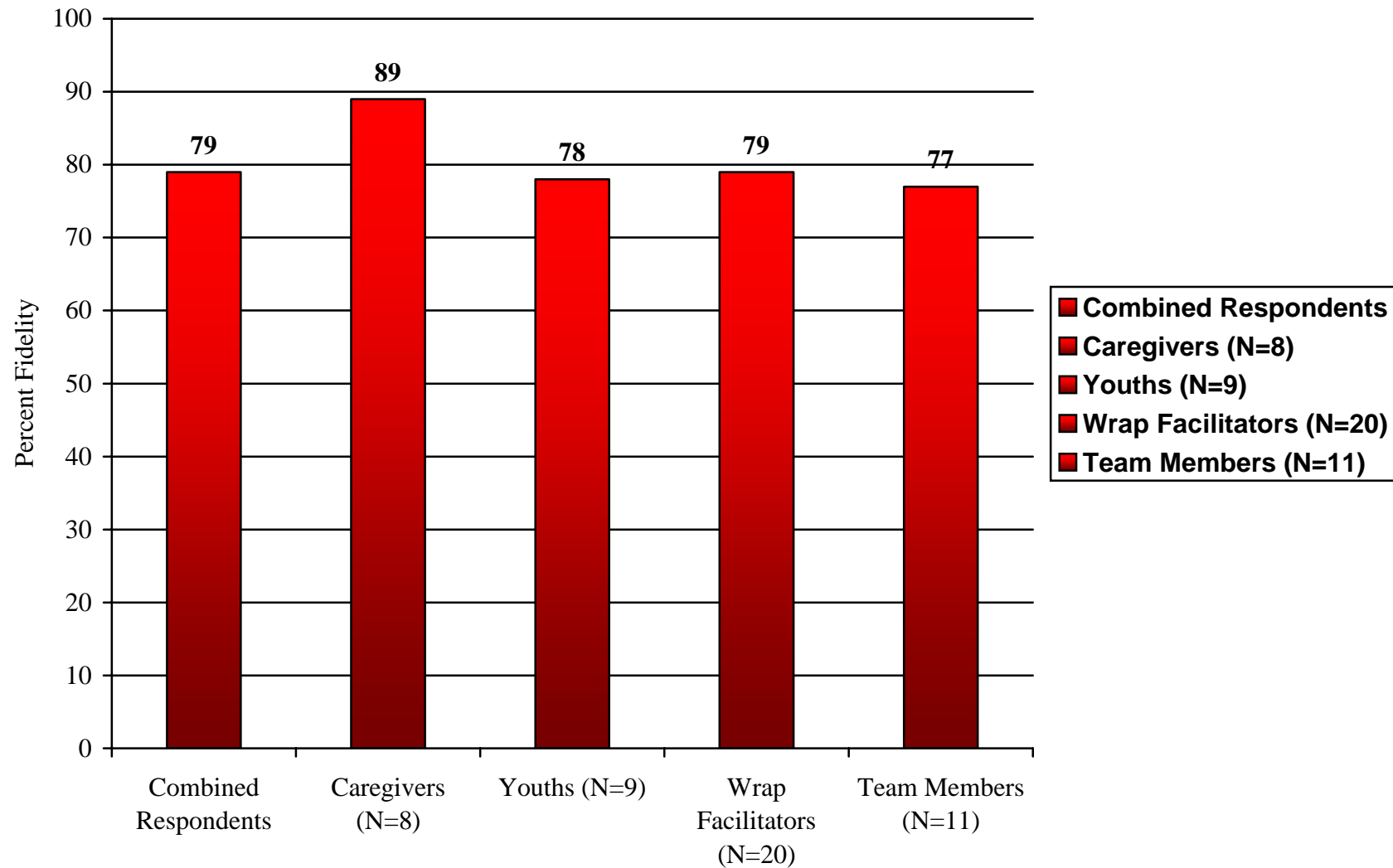
This section includes four graphs that provide a broad overview of the fidelity to the principles of the Wraparound process at the *EXAMPLE SITE* as measured by the WFI. The goal is to provide your agency with several different ways to examine the interview ratings by Wraparound facilitators, caregivers, team members, and youth.

Percent Wraparound Fidelity for Combined and Individual Respondents

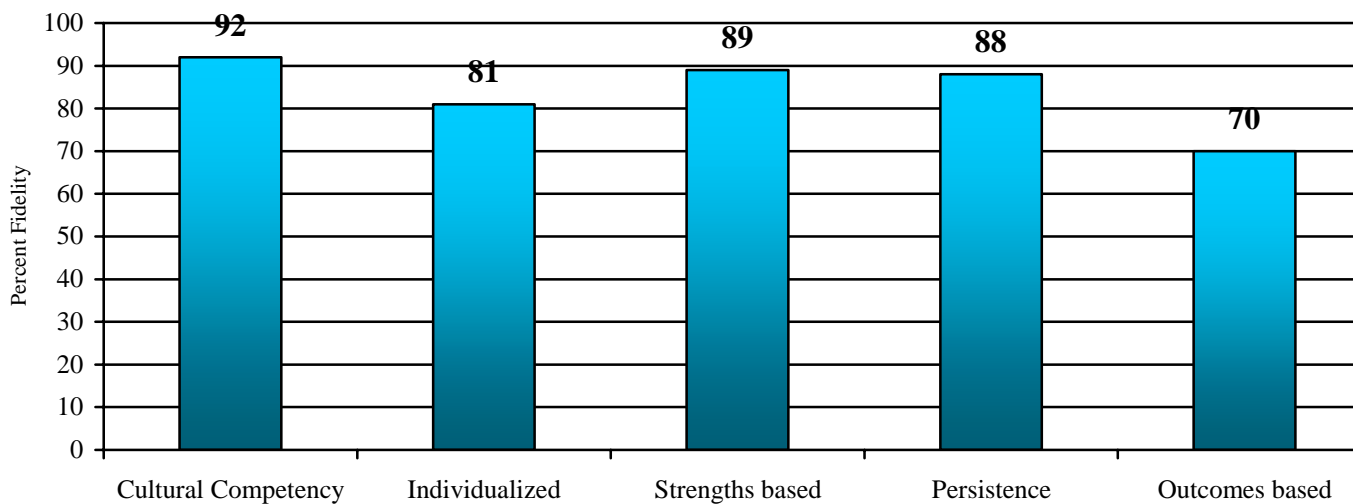
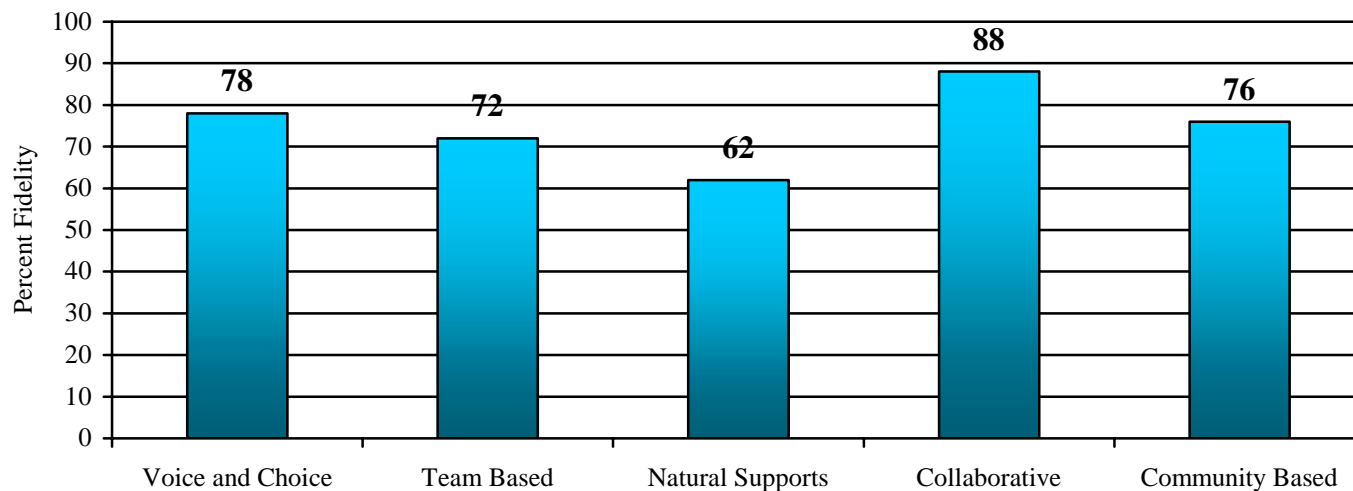
Description. This graph shows *EXAMPLE SITE's* Total Wraparound fidelity scores, expressed as a percent¹ for each of the respondents. These scores reflect broad summaries of all the collected interview ratings and are useful when you are interested in assessing overall fidelity. The *combined* Total Fidelity score is the average WFI rating for 20 families (including 8 caregivers, 9 youth, 11 team members, and 20 Wraparound facilitators) on all 10 principles. The *individual* respondent Total Fidelity scores are the average WFI ratings on all 10 principles and 4 phases for each respondent.

¹ One way of examining Wraparound fidelity is to convert total or Principle scores to percentage scores. Thus, for Total Fidelity scores, 100% fidelity equals the maximum possible score of 80 for caregivers and Wraparound facilitators (40 items on a 0-2 scale) or 64 for youth (32 items on a 0-2 scale). For individual Principle scores, 100% fidelity equals the maximum possible score of 8 (4 items on a 0-2 scale).

Percent Wraparound Fidelity for Combined and Individual Respondents



Combined Percentages on Each Principle for 20 Families



This can be used to compare WFI fidelity scores for different domains of the wraparound process. These overall scores reflect the combination of the four respondents' scores, which results in a single percentage on each Principle.

Comparison of Wraparound facilitator, Caregiver, Team Member, and Youth Principle Percentages for 20 Total Families

Description. What the earlier graphs do not allow you to do is compare responses from the three types of respondents. The following graphs depict the 20 total families comparing respondents on each Principle.

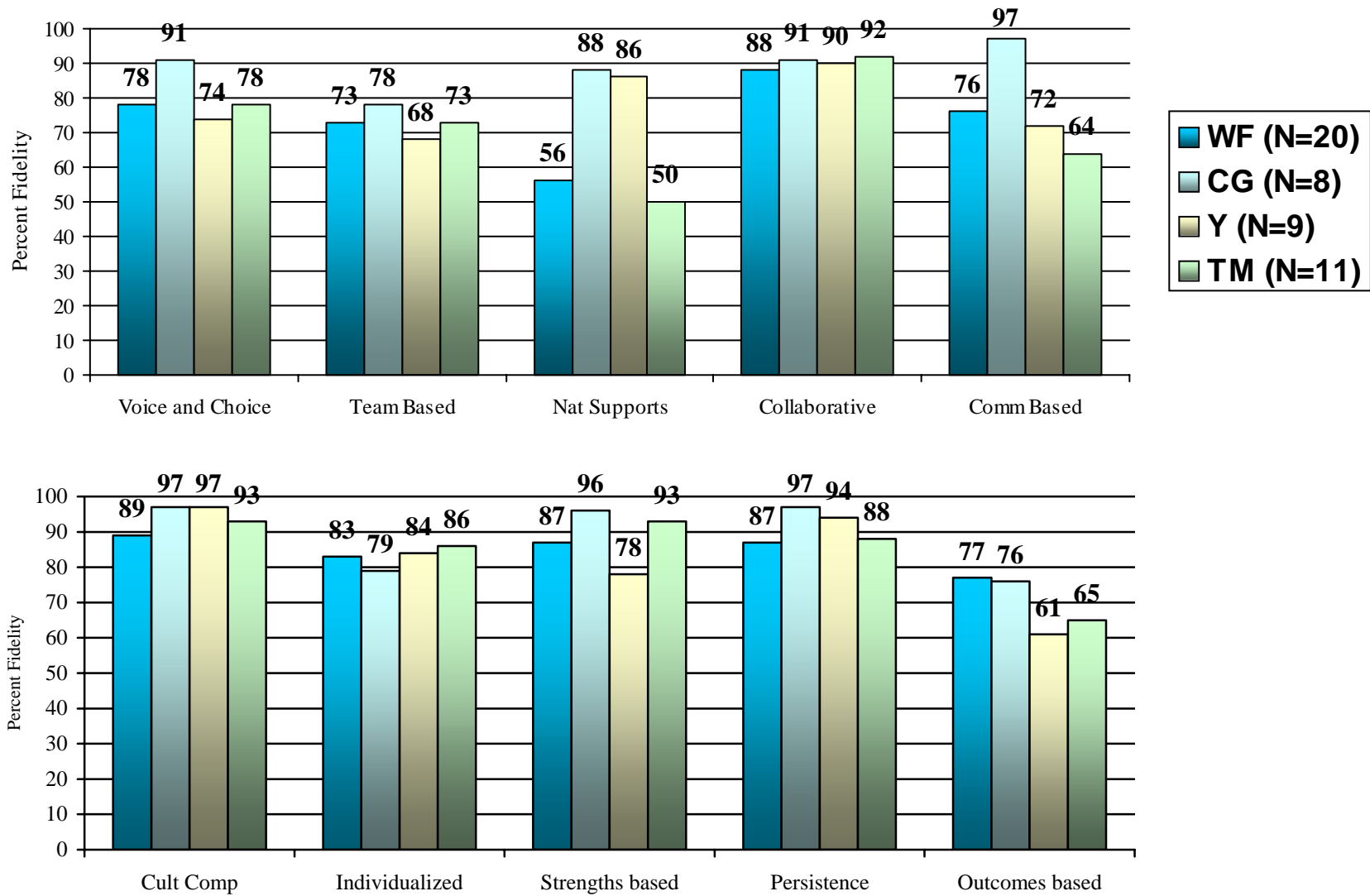
Summary. This graph shows low to moderate agreement between respondents for the 20 families. Seven principles demonstrated at least a 10% difference between these respondents: Voice & Choice (17%), Team Based (10%), Natural Supports (38%), Community Based Services and Supports (33%), Strengths Based Services and Supports (18%), Persistence (10%), and Outcome Based (15%).

There is one area where the *EXAMPLE SITE* data differs noticeably from recent preliminary WFI-4 pilot data. Preliminary pilot data (WF n=136; CG n=154; Y n=67) results typically show the Wraparound Facilitator scores slightly higher than both the Caregiver & Youth when looking at total fidelity. For example, the pilot data shows that total fidelity for Caregivers = 71.93; Youth = 72.1; and Facilitators = 80.42. In comparison, the *EXAMPLE SITE* data shows total fidelity for Caregivers = 89; Youth = 78; and Facilitators = 79. While the Facilitator data is close in comparison, the Caregiver data is markedly higher.

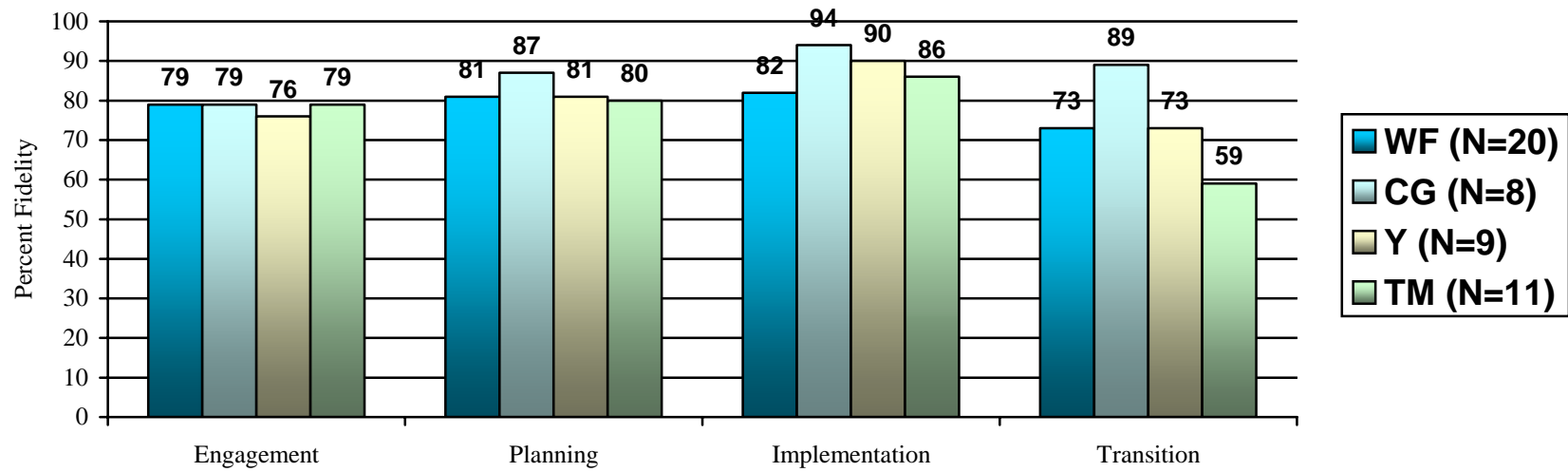
For more comparisons to the preliminary WFI-4 data, please see:

<http://rtckids.fmhi.usf.edu/rtcconference/handouts/pdf/20/Session%2041/bruns.pdf>.

Comparison of All Respondents for Twenty Total Families by Principle



Comparison of All Four Respondents for Twenty Total Families by Phase

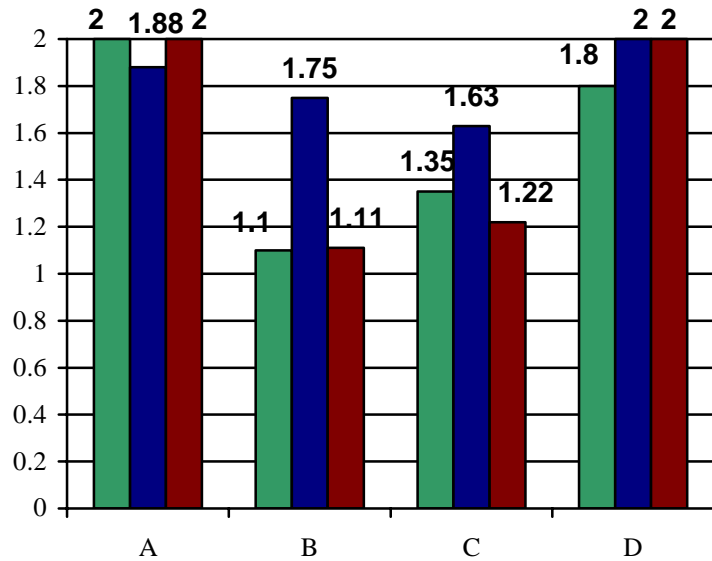


ITEM GRAPHS

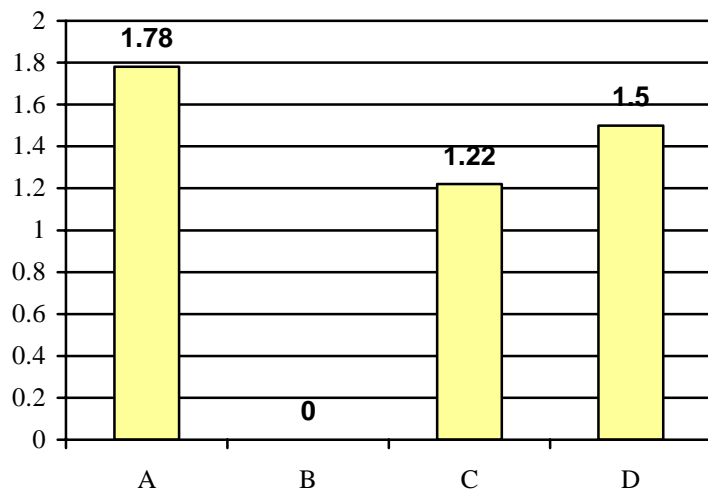
With these graphs we provide detailed item-level data for all four respondents, Facilitator, Caregiver, Team Member, and Youth. Each page shows items specific to an individual Principle. Graphs in this section represent the average score for each item while the tables show the distribution of responses for all respondents. Wraparound facilitator, team member, and caregiver data are presented in the same graphs and tables because the items are nearly identical for both respondents.² The purpose of these item graphs is to provide greater detail about fidelity to Wraparound that might point to specific issues that need improvement.

² The items used for these tables are from the Wraparound facilitator form.

Principle 1: Voice and Choice

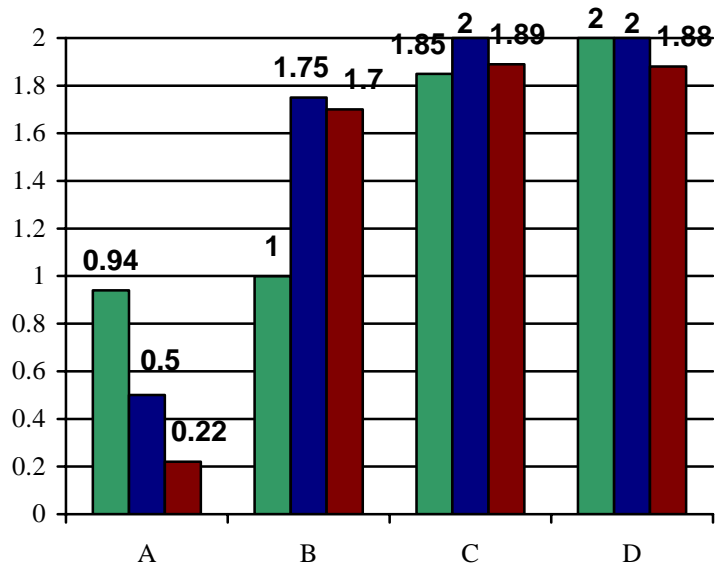


		Wraparound facilitator n = 20			Caregiver n = 8			Team Member n = 11		
		Yes	Sometimes	No	Yes	Sometimes	No	Yes	Sometimes	No
A	1.2 Before the first team meeting, did you fully explain the wraparound process and the choices the family could make?	17	0	0	7	1	0	9	0	0
B	2.10 Would you say that people other than the family have higher priority than the family in designing their wraparound plan? (REVERSE SCORE ITEM)	9	0	11	1	0	7	4	0	5
C	3.1 Are important decisions ever made about the child or family when they are not there? (REVERSE SCORE ITEM)	6	1	13	1	1	6	3	1	5
D	3.15 Does the child or youth have the opportunity to communicate his or her own ideas when the time comes to make decisions?	18	0	2	8	0	0	9	0	0

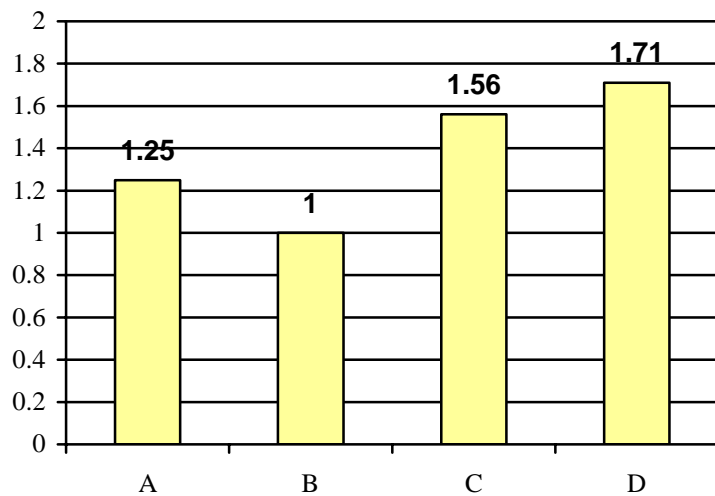


		Youth n = 9		
		Yes	Sometimes	No
A	1.2 Before your first team meeting, did your wraparound facilitator fully explain how the wraparound process would work?	8	0	1
B	Youth = N/A			
C	3.1 Are important decisions made about you or your family when you are not there? (REVERSE SCORE ITEM)	3	1	5
D	3.13 Do you have the chance to give your ideas during the wraparound team meetings?	6	0	2

Principle 2: Team Based

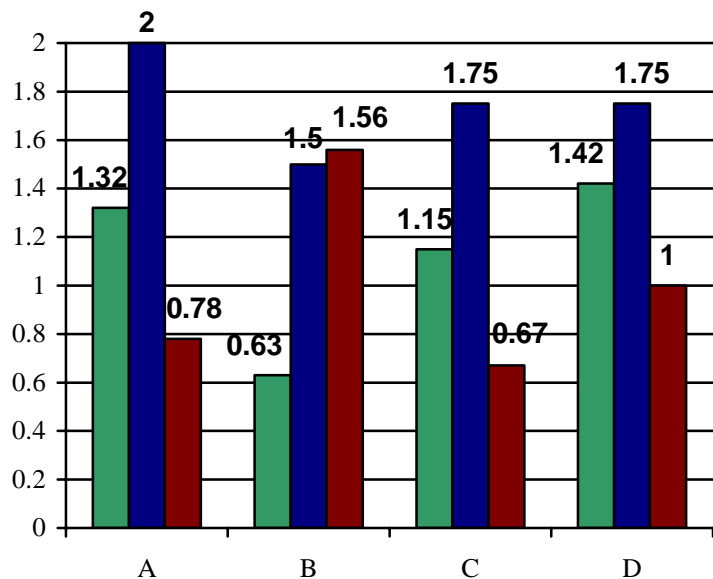


		Wraparound facilitator n = 20			Caregiver n = 8			Team Member n = 11		
		Yes	Sometimes	No	Yes	Sometimes	No	Yes	Sometimes	No
A	1.4 Did the family members select the people who would be on their wraparound team?	8	1	9	2	0	6	1	0	8
B	1.5 Is it difficult to get team members to attend team meetings when they are needed? (REVERSE SCORE ITEM)	8	2	8	1	0	7	1	1	8
C	2.2 Did the team develop any kind of written statement about what the future will look like for the child and family, or what the team will achieve for the child and family?	18	1	1	8	0	0	8	1	0
D	3.12 Does the team go out of its way to make sure that all team members – including friends, family, and natural supports – present ideas and participate in decision making?	20	0	0	8	0	0	7	1	0

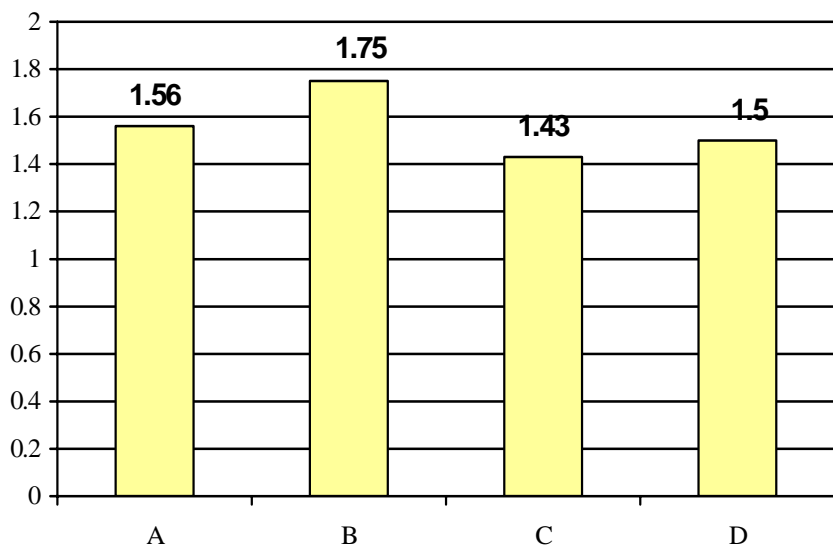


		Youth n = 9		
		Yes	Sometimes	No
A	1.4 Did you help pick the people who would be on your wraparound team?	5	0	3
B	1.5 Do you have a friend or advocate who participates actively on your wraparound team?	4	0	4
C	1.6 Would you have different people on your team if you could? (REVERSE SCORE ITEM)	1	2	6
D	3.10 Does everyone on your team talk and give their ideas during your wraparound team meeting?	6	0	1

Principle 3: Natural Supports

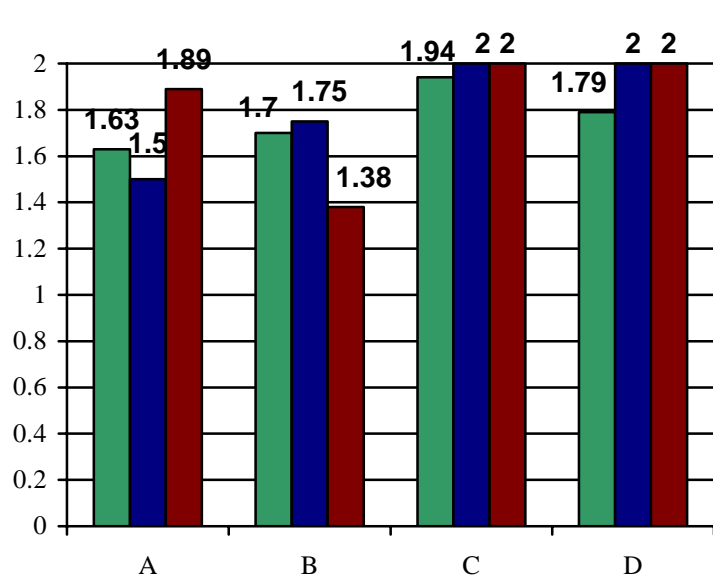


		Wraparound facilitator n = 20			Caregiver n = 8			Team Member n = 11		
		Yes	Sometimes	No	Yes	Sometimes	No	Yes	Sometimes	No
A	3.4 Does the team find ways to increase the support the family gets from its friends and family members?	11	3	5	8	0	0	3	1	5
B	3.6 Is there a friend or advocate of the child or family who actively participates on the wraparound team?	5	2	12	6	0	2	7	0	2
C	4.2 Has the wraparound process helped the child develop friendships with other youth who will have a positive influence on him or her?	11	1	8	7	0	1	3	0	6
D	4.6 Has the wraparound process helped the family to develop or strengthen relationships that will support them when wraparound is finished?	12	3	4	7	0	1	3	0	3

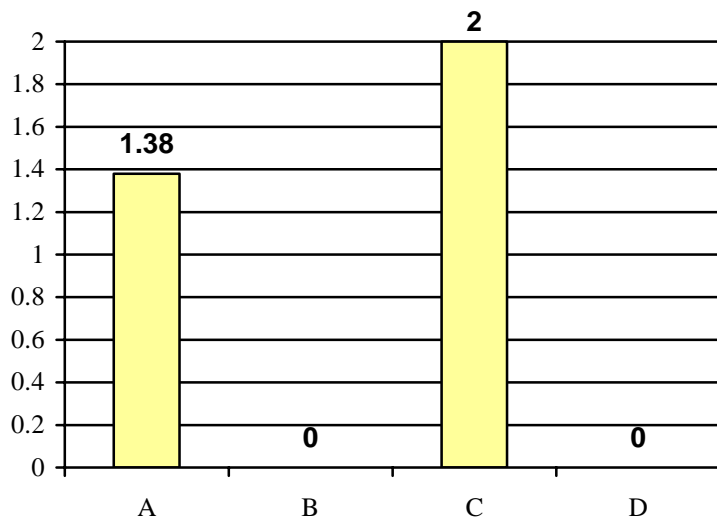


		Youth n = 9		
		Yes	Sometimes	No
A	3.4 Do people on the team help you do things with your friends and family?	7	0	2
B	3.5 When things are not going right, does the team help you talk with friends and other people you like to talk to?	7	0	1
C	4.2 Has the wraparound process helped you and your family to develop relationships with people who will support you when wraparound is finished?	5	0	2
D	4.3 Has the wraparound process helped you become friends with other youth in the community?	6	0	2

Principle 4: Collaborative

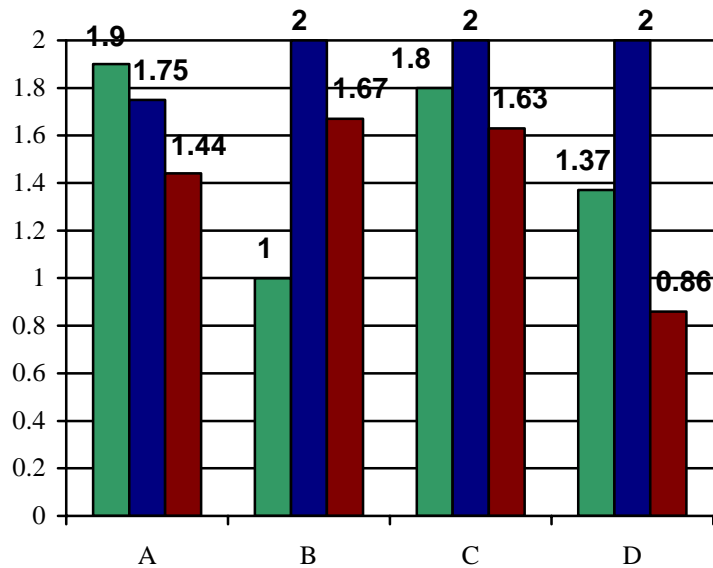


	Wraparound facilitator n = 20			Caregiver n = 8			Team Member n = 11		
	Yes	Sometimes	No	Yes	Sometimes	No	Yes	Sometimes	No
A 2.1 Did the family plan and its team create a written plan of care (or wraparound plan, child and family plan) that describes how the team will meet the child's and family's needs?	13	5	1	4	4	0	8	1	0
B 2.6 Are there members of the wraparound team who do <u>not</u> have a role in implementing the plan? (REVERSE SCORE ITEM)	2	2	16	1	0	7	2	1	5
C 2.7 Does the team brainstorm many strategies to address the family's needs before selecting one?	16	1	0	8	0	0	7	0	0
D 3.5 Do the members of the team hold each another responsible for doing their part of the wraparound plan?	16	2	1	8	0	0	8	0	0

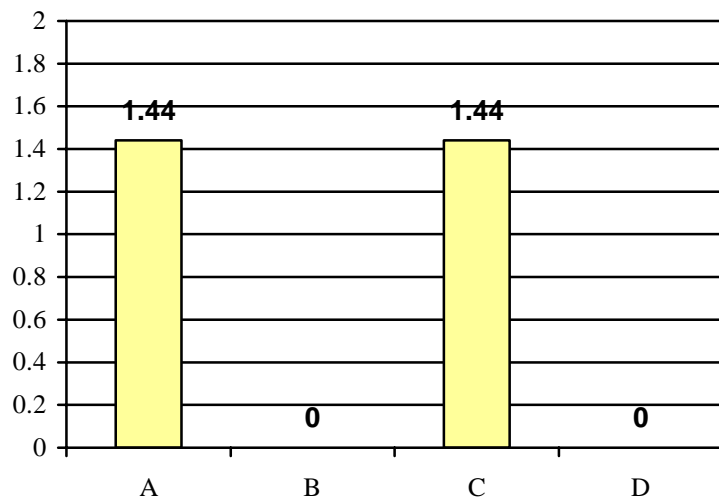


	Youth n = 9		
	Yes	Sometimes	No
A 2.1 Did you help to create a written plan that describes how the team will meet your family's needs?	5	1	2
B Youth = N/A			
C 2.2 During meetings does your team brainstorm many ideas to meet your needs before picking one?	8	0	0
D Youth = N/A			

Principle 5: Community Based

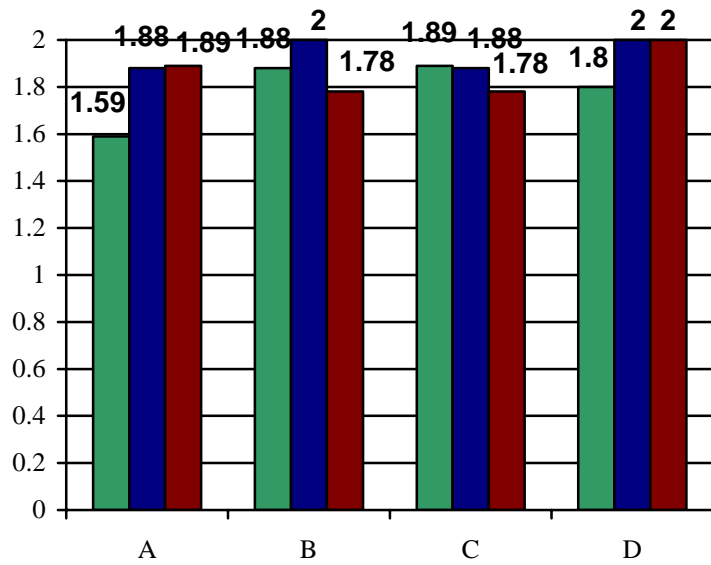


	Wraparound facilitator n = 20			Caregiver n = 8			Team Member n = 11		
	Yes	Sometimes	No	Yes	Sometimes	No	Yes	Sometimes	No
A 2.5 Does the wraparound plan include strategies for helping the child get involved with activities in her or his community?	19	0	1	6	2	0	5	3	1
B 2.9 Do you feel confident that, in the event of a major crisis, the team can keep the child or youth in the community?	9	1	9	7	0	0	5	0	1
C 3.8 Are the services and supports in the wraparound plan difficult for the family to access? (REVERSE SCORE ITEM)	0	4	16	0	0	8	1	1	6
D 4.7 Do you feel like the child and family will be able to succeed without the formal wraparound process?	11	4	4	8	0	0	3	0	4

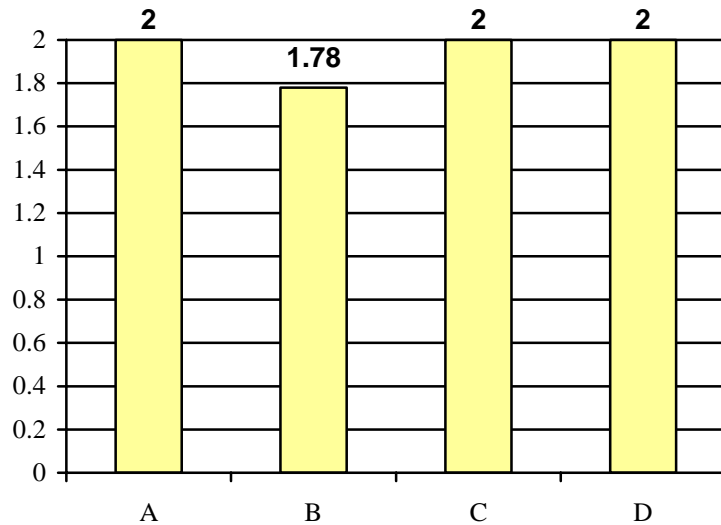


	Youth n = 9		
	Yes	Sometimes	No
A 2.4 Does your wraparound plan include things that get you involved with activities in your community?	6	1	2
B Youth = N/A			
C 3.7 Are the places you go to for services hard to reach because they are far away? (REVERSE SCORE ITEM)	2	1	6
D Youth = N/A			

Principle 6: Culturally Competent

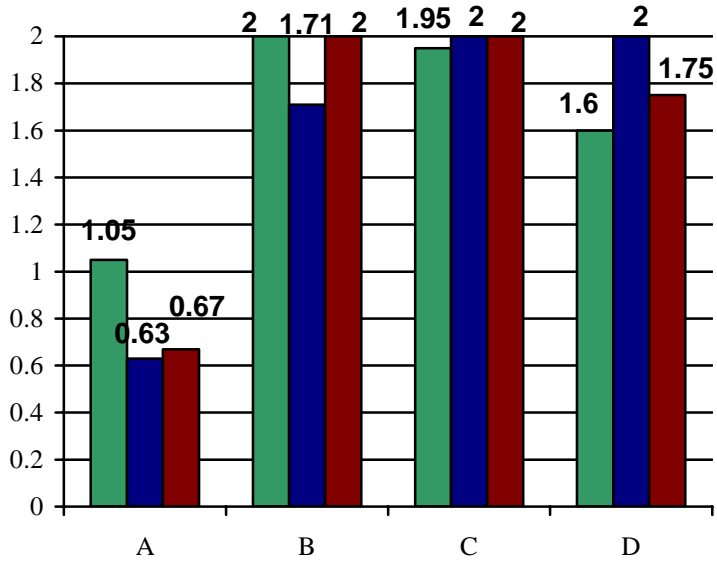


	Wraparound facilitator n = 20			Caregiver n = 8			Team Member n = 11		
	Yes	Sometimes	No	Yes	Sometimes	No	Yes	Sometimes	No
A 1.1 When you first met with the family, were they given ample time to talk about their strengths, beliefs, and traditions?	13	1	3	7	1	0	8	1	0
B 2.11 During the planning process, did the team take enough time to understand the family's values and beliefs?	15	2	0	8	0	0	7	2	0
C 3.10 Do members of the team always use language the family can understand?	17	2	0	7	1	0	8	0	1
D 3.14 Do all the members of the team demonstrate respect for the family?	17	2	1	8	0	0	9	0	0

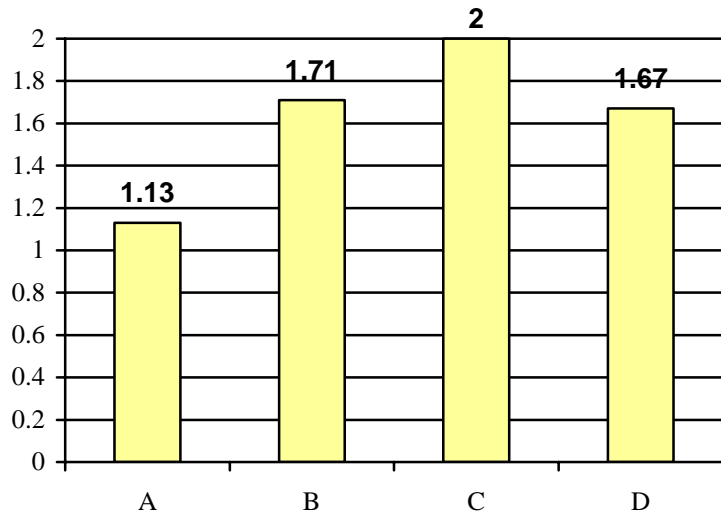


	Youth n = 9		
	Yes	Sometimes	No
A 1.1 When you first met your wraparound facilitator, were you given time to talk about things you are good at and things you like to do?	9	0	0
B 2.5 When your team was making its plan, did you and your family have many chances to talk about what you like and what you believe in?	8	0	1
C 3.8 Do members of your team always use language you can understand?	8	0	0
D 3.12 Do all the members of your team show respect for you and your family?	8	0	0

Principle 7: Individualized

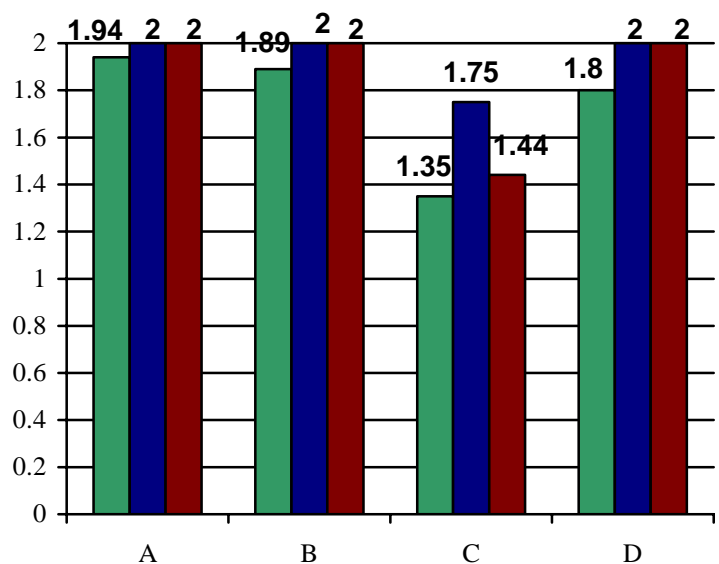


	Wraparound facilitator n = 20			Caregiver n = 8			Team Member n = 11		
	Yes / Sometimes / No			Yes / Sometimes / No			Yes / Sometimes / No		
A	<p>2.3 Can you summarize the services, supports, and strategies that are in the family's wraparound plan?</p> <p><i>(On the WF FORM, this item will be scored a '2' if majority of services, supports, and strategies are informal or non-professional services, a '1' if they are about equal, and a '0' if the majority are professional.) On the CG& TM FORMS, it is a REVERSE SCORE ITEM! (Does your wraparound plan include mostly professional services?)</i></p>								
	7	7	6	5	1	2	6	0	3
B	<p>2.8 Is there a crisis or safety plan that specifies what everyone must do to respond to a crisis?</p>								
	20	0	0	6	0	1	7	0	0
C	<p>3.2 When the wraparound team has a good idea for a support or service for the child, can it find the resources or figure out some way to make it happen?</p>								
	18	1	0	8	0	0	8	0	0
D	<p>4.4 Has the team helped the child or youth prepare for major transitions?</p>								
	15	2	3	7	0	0	7	0	1

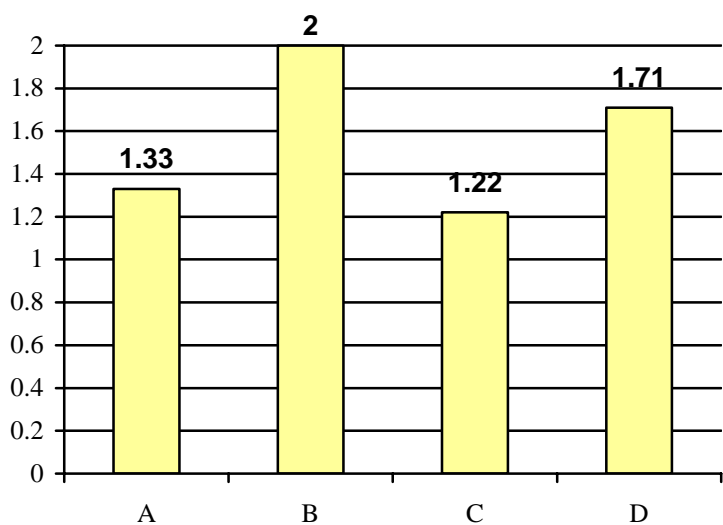


	Youth n = 9		
	Yes / Sometimes / No		
A	<p>2.6 Does your wraparound plan include mostly professional services? (REVERSE SCORE ITEM)</p>		
	3	1	4
B	<p>2.7 If things go wrong or there is a crisis, is there a plan that says what everyone must do?</p>		
	6	0	1
C	<p>3.2 When your wraparound team has a good idea, can it figure out some way to make it happen?</p>		
	8	0	0
D	<p>4.4 Has your team helped you prepare for major changes (e.g., new school, new residential placement, independent living)?</p>		
	5	0	1

Principle 8: Strengths based

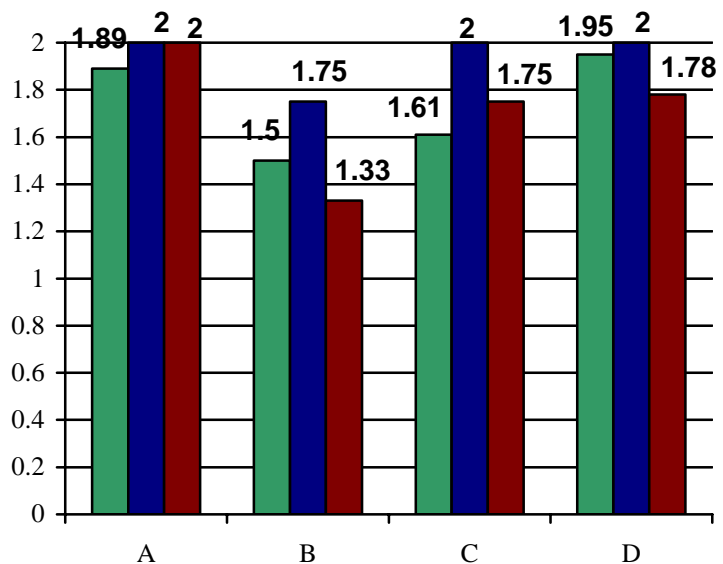


	Wraparound facilitator n = 20			Caregiver n = 8			Team Member n = 11		
	Yes	Sometimes	No	Yes	Sometimes	No	Yes	Sometimes	No
A 1.3 At the beginning of the wraparound process, was the family given an opportunity to tell you what things have worked in the past for the child and family?	17	1	0	7	0	0	8	0	0
B 2.4 Are the supports and services in the wraparound plan connected to the strengths and abilities of the child and family?	18	0	1	8	0	0	9	0	0
C 3.3 Does the wraparound team get the child involved with activities she or he likes and does well?	11	5	4	7	0	1	5	3	1
D 3.11 Does the team create a positive atmosphere around successes and accomplishments at each team meeting?	17	2	1	8	0	0	9	0	0

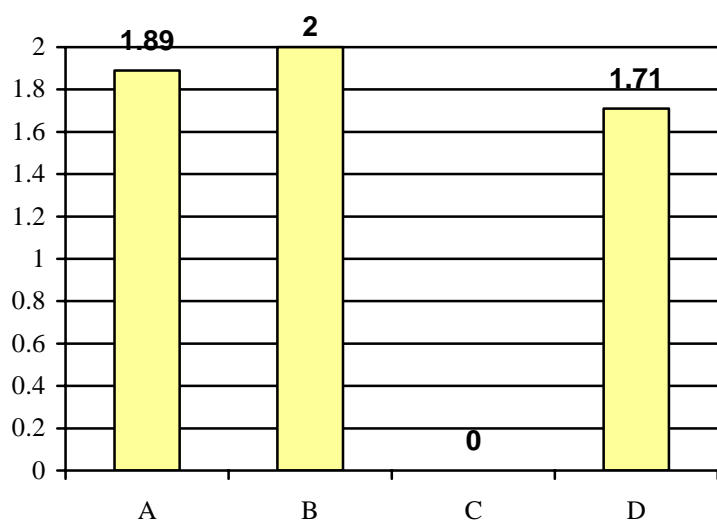


	Youth n = 9		
	Yes	Sometimes	No
A 1.3 At the beginning of the wraparound process, did you have a chance to tell your wraparound facilitator what things have worked in the past to help you and family?	6	0	3
B 2.3 Does the team know what you like and the things that you do well?	9	0	0
C 3.3 Does your wraparound team get you involved with activities you like and do well?	5	1	3
D 3.9 Do your wraparound team meetings make you feel good about your successes and accomplishments?	6	0	1

Principle 9: Persistence

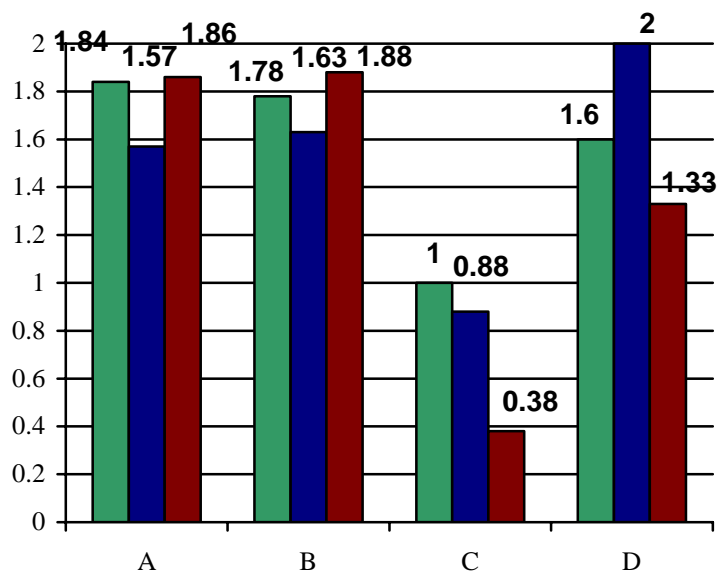


	Wraparound facilitator n = 20			Caregiver n = 8			Team Member n = 11		
	Yes	Sometimes	No	Yes	Sometimes	No	Yes	Sometimes	No
A 3.7 Does the team come up with new ideas for the wraparound plan whenever the family's needs change?	16	2	0	8	0	0	8	0	0
B 3.13 Do you think the wraparound process could be discontinued before the family is ready for it to end? (REVERSE SCORE ITEM)	5	0	15	1	0	7	2	0	4
C 4.5 After formal wraparound has ended, do you think that the process will be able to be "re-started" if the youth or family needs it?	14	1	3	7	0	0	7	0	1
D 4.8 Will some members of the team be there to support the family when formal wraparound is finished?	19	1	0	7	0	0	8	0	1

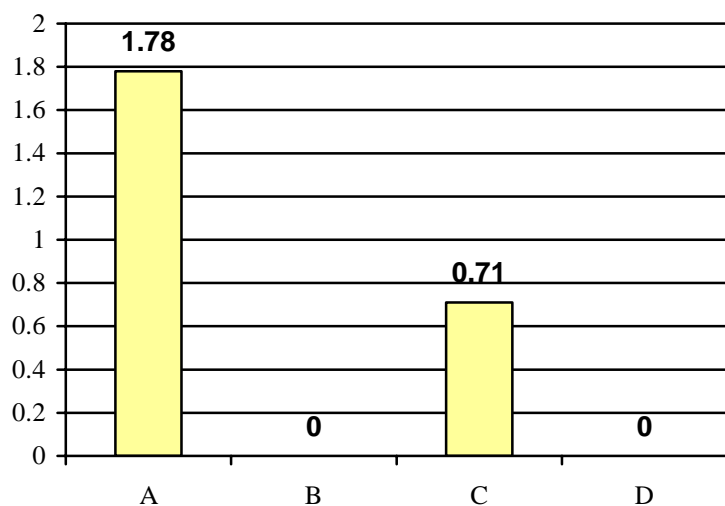


	Youth n = 9		
	Yes	Sometimes	No
A 3.6 Does your team come up with new ideas for your wraparound plan whenever something is not working?	8	1	0
B 3.11 Do you think you could get "kicked out" of wraparound before you or your family is ready for it to end? (REVERSE SCORE ITEM)	0	0	8
C Youth = N/A			
D 4.5 Will people on your team be there to help you when wraparound is finished?	6	0	1

Principle 10: Outcomes based



	Wraparound facilitator n = 20			Caregiver n = 8			Team Member n = 11		
	Yes	Sometimes	No	Yes	Sometimes	No	Yes	Sometimes	No
A 1.6 Before the first wraparound team meeting, did you go through a process of identifying what leads to crises or dangerous situations for the child and family?	17	1	1	5	1	1	6	1	0
B 3.9 Does the team assign specific tasks to all team members at the end of each meeting?	14	4	0	6	1	1	7	1	0
C 4.1 Has the team discussed a plan for how the wraparound process will end?	8	4	8	3	1	4	1	1	6
D 4.3 Has the wraparound process helped the child to solve her or his own problems?	14	4	2	8	0	0	6	0	3



	Youth n = 9		
	Yes	Sometimes	No
A 2.8 Do you and your family get the help that you need?	8	0	1
B Youth = N/A			
C 4.1 Has your team discussed a plan for how the wraparound process will end? (i.e., a "transition plan")	1	3	3
D Youth = N/A			

References

- Burns, B. J. & Goldman, K. (Eds.) (1999). *Systems of care: Promising practices in children's mental health, 1998 series, Vol. IV: Promising practices in wraparound for children with severe emotional disorders and their families*. Washington DC: Center for Effective Collaboration and Practice.
- Bruns, E.J. (2005). Is it Wraparound Yet? Bootstrapping Fidelity Standards Using the WFI-3. Paper presented at the 18th Annual Research Conference: A System of Care for Children's Mental Health, Tampa, FL.
- Bruns, E.J., Suter, Rast, J., Walker, J.S. & Zabel (2006). Wraparound Fidelity Index, version 4. Results of an Initial Pilot Test. National Wraparound Initiative & Systems of Care. Presentation, retrieved from the web September 1, 2006 from: http://depts.washington.edu/wrapeval/docs/FINAL_WFI4poster.ppt
- Leverentz-Brady, K.M., Suter, J.C., & Bruns, E.J. (2005). The Wraparound Process: An in-depth look at fidelity patterns from a national dataset. Paper presented at the 18th Annual Research Conference: A System of Care for Children's Mental Health, Tampa, FL.
- Walker, J. S., Bruns, E.J., VanDenBerg, J.D., Rast, J. Osher, T.W., Miles, P., Adams, J., & National Wraparound Initiative Advisory Group (2004). *Phases and activities of the wraparound process*. Portland, OR: National Wraparound Initiative, Research and Training Center on Family Support and Children's Mental Health, Portland State University.